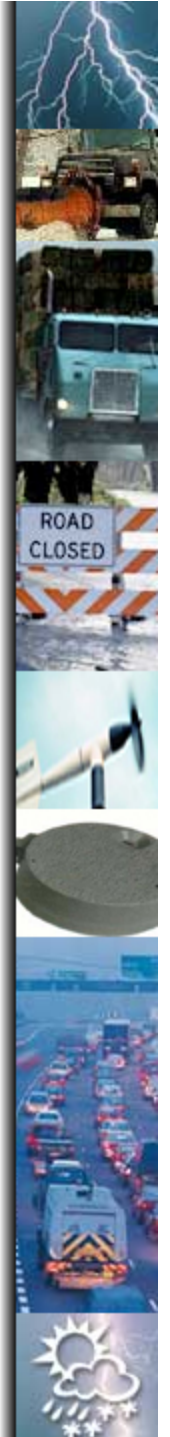
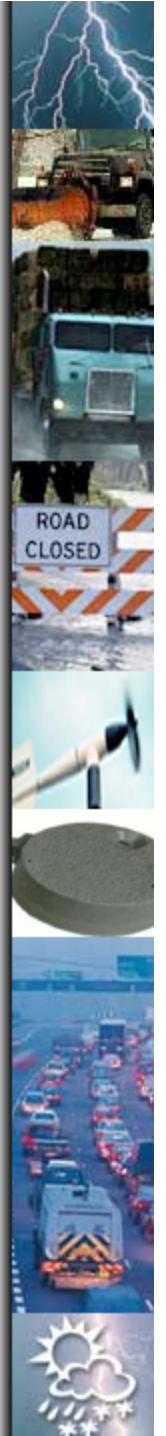


Review on Interpreting Use Cases and Operational Scenarios



Use Cases & Operational Scenarios

- Unified Modeling Language (UML) notation for expressing systems
- Use case diagrams are used to describe the outwardly visible operations of a system
 - Actors
 - Use Cases
 - Associations

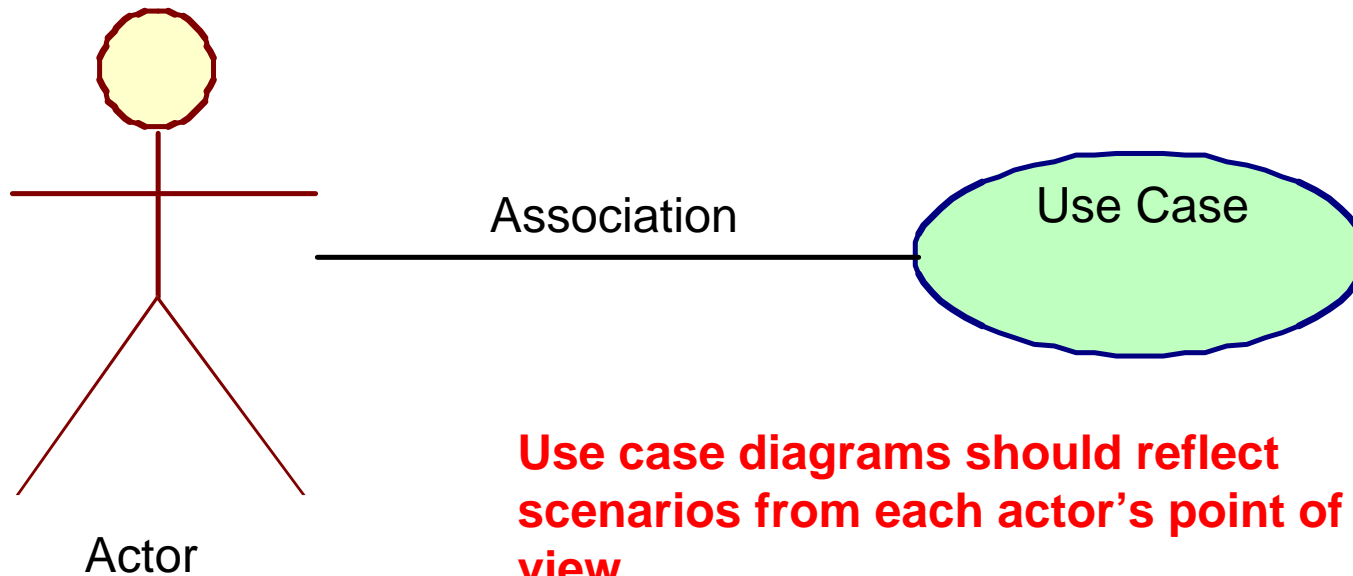


What Use Cases Look Like

Actors, represented by the stick figures, represent any external operator or system interfacing with Clarus.

Associations indicate that there is some sort of interaction between the actor and the use case.

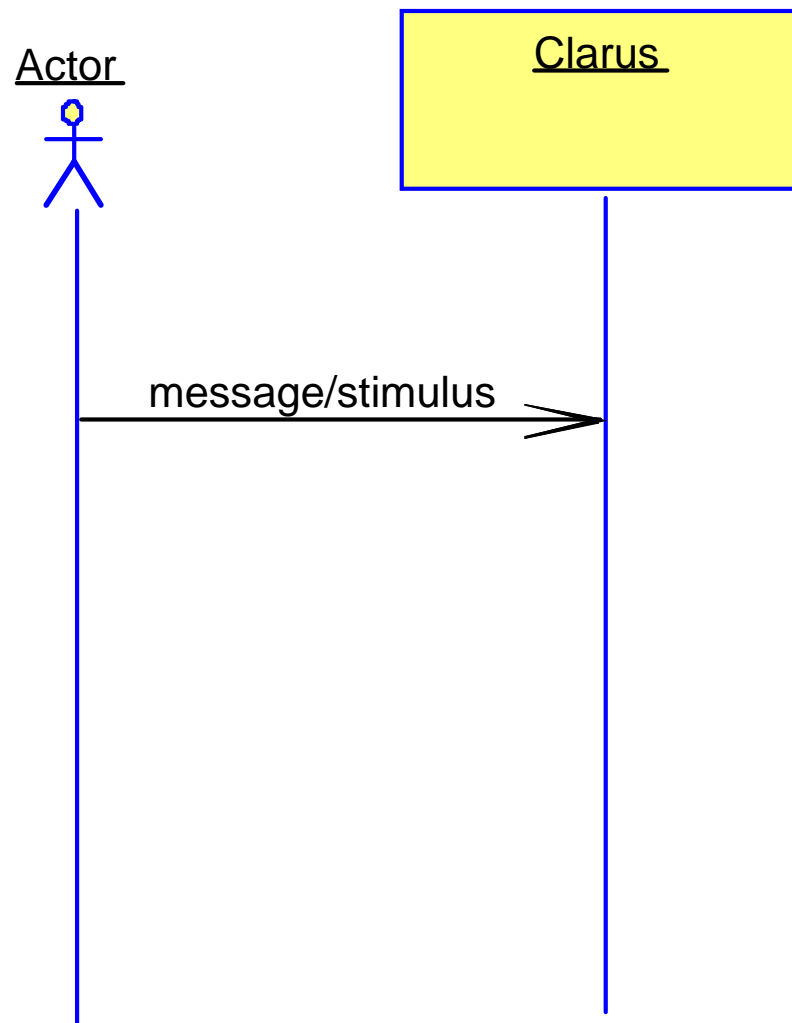
Use Cases, represented by ovals, describe the things the actors want the system to do,



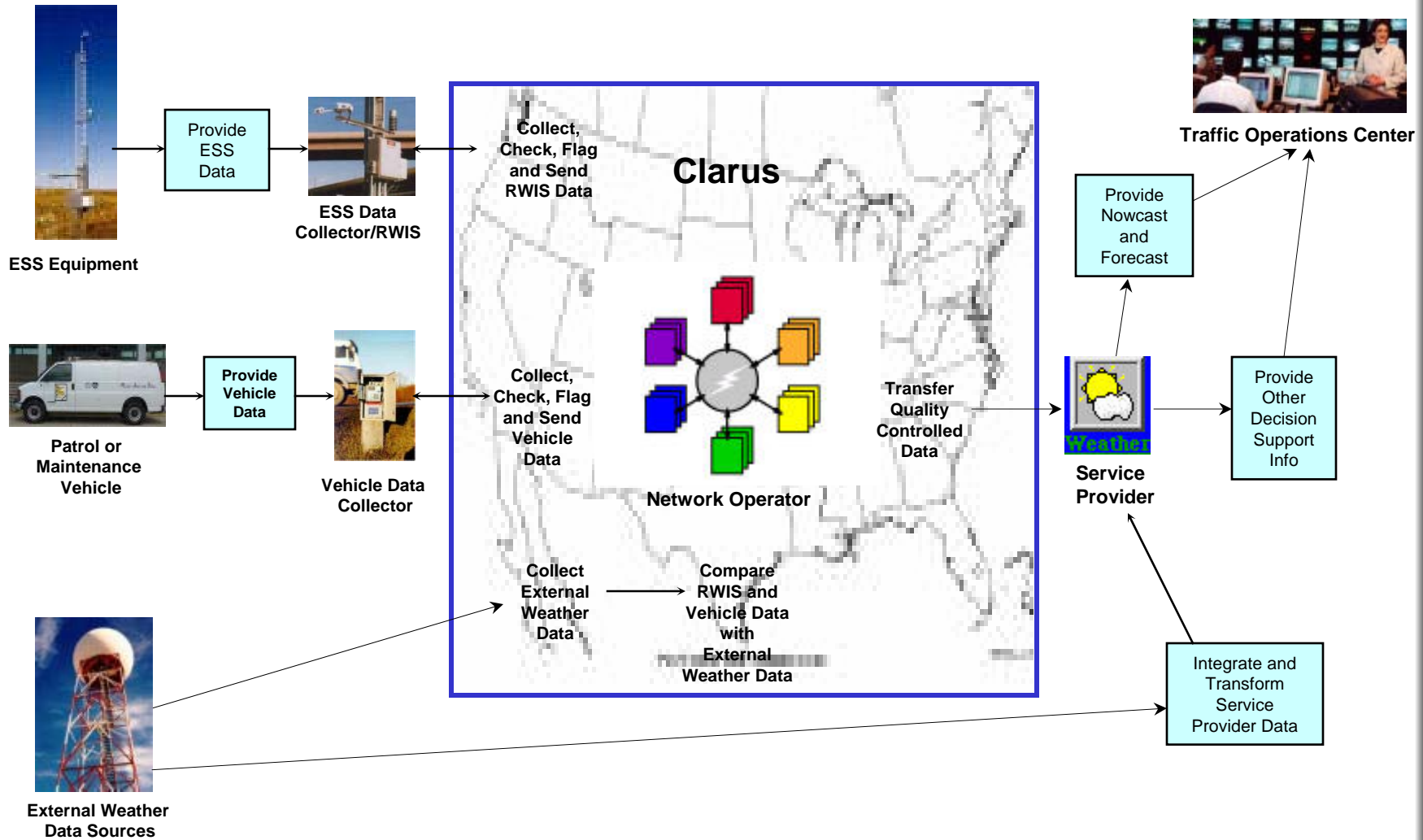
Use case diagrams should reflect scenarios from each actor's point of view



Message Sequence Diagrams

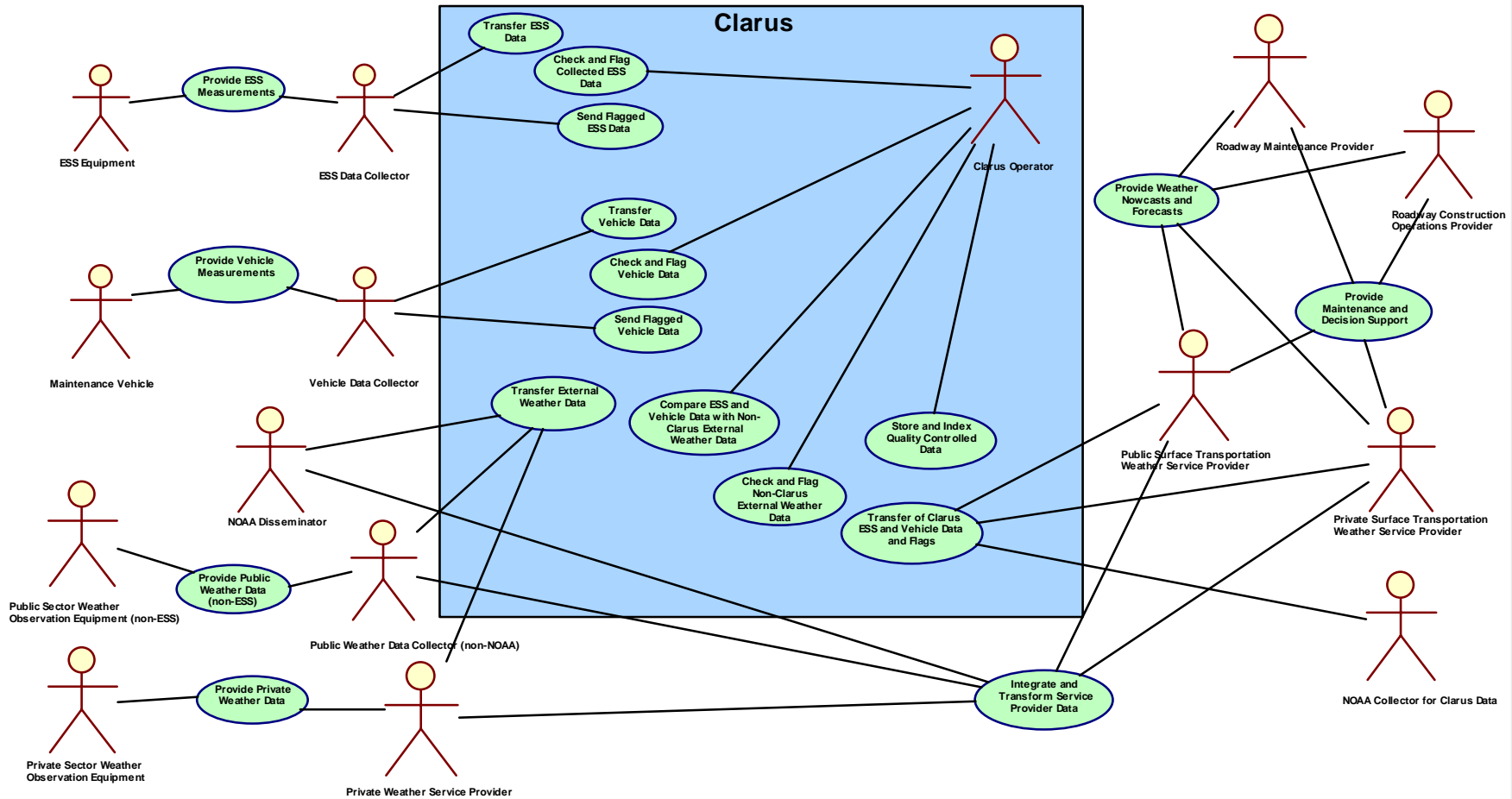


Why Use Cases Don't Look Like This



Example Use Case

jab1



Slide 6

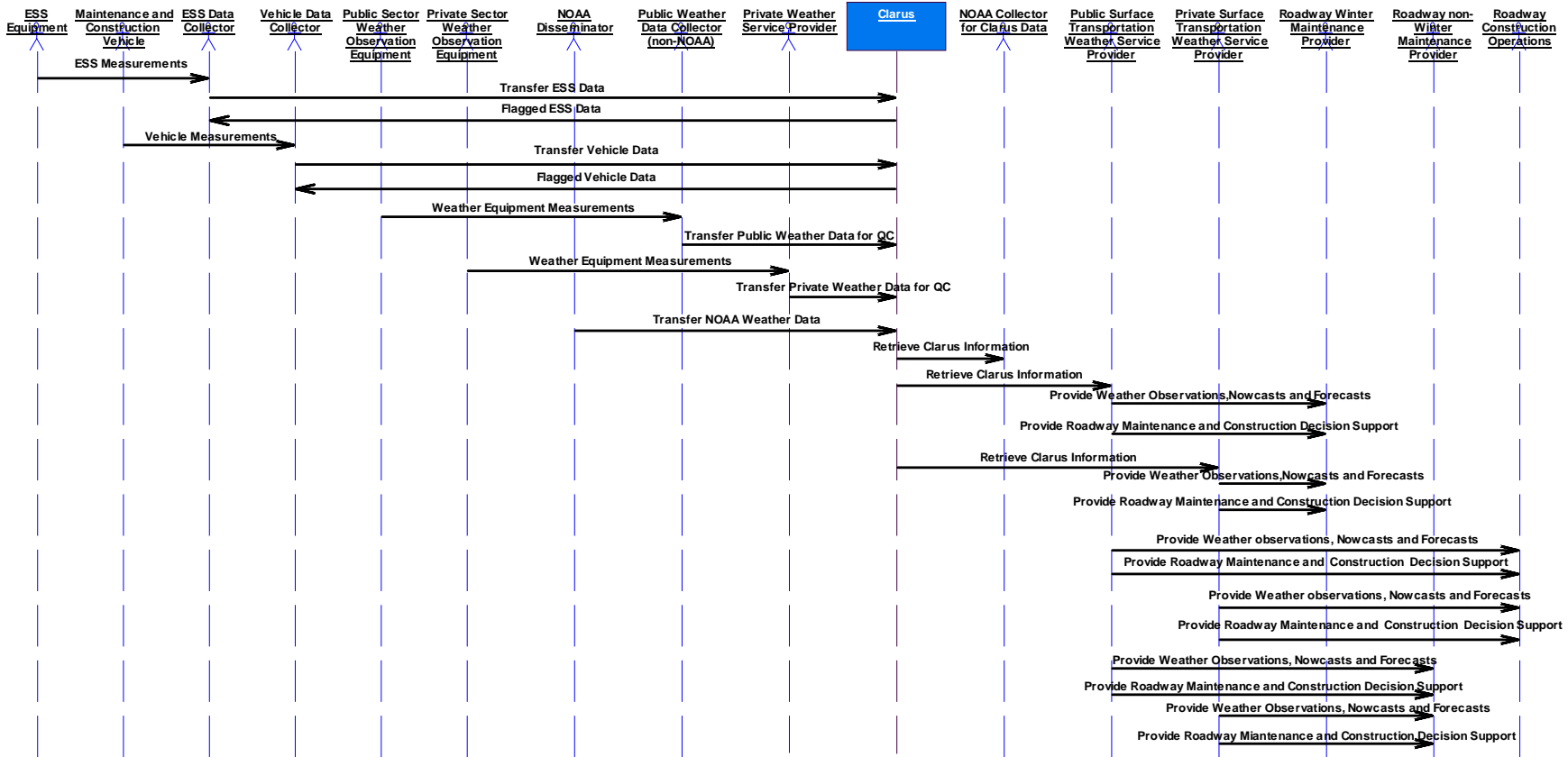
jab1

I added a latest use case diagram

Jeff Brummond, 2/21/2005

Example Sequence Diagram

jab2



Slide 7

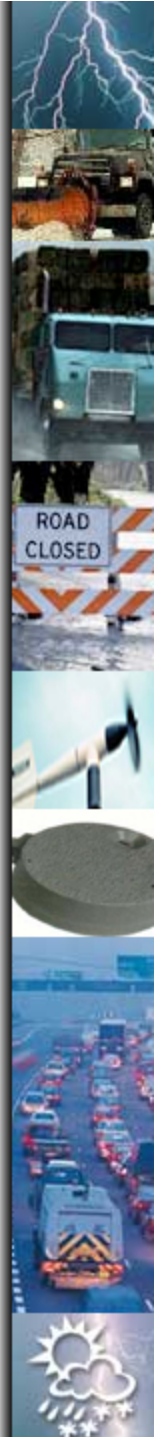
jab2

I added a new sequence diagram

Jeff Brummond, 2/21/2005

Charge for the Breakout Groups

- Consider the Operational Scenarios
- Dialogue and Feedback
- Meet the Breakout Staff



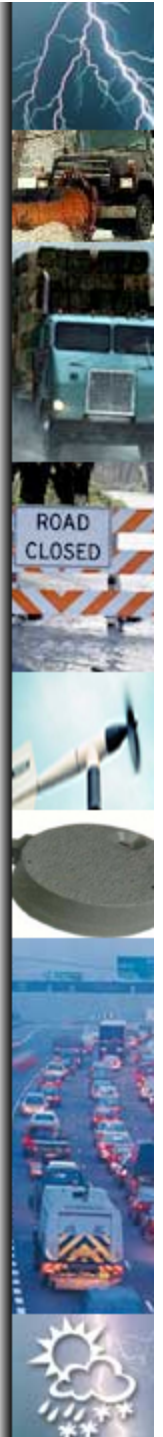
Questions to Consider

1. Do the Use Case scenarios documented in the Concept of Operations report capture all the Clarus operational needs?
2. Do the Actors/Use Cases interfacing in the Clarus system adequately capture Clarus operations in support of your needs?
3. What potential changes do you anticipate in services rendered by Weather Service Providers as Clarus becomes an active quality-controlled data clearinghouse resource?
4. How will Clarus differ from what is presently provided by Weather Service Providers?



Questions to Consider

5. What are the advantages/disadvantages of a Regional vs. National Clarus data collection and/or dissemination system?
6. Are there other technical/institutional issues affecting Clarus in addition to what is contained in the Concept of Operations report?
7. What other task force groups are needed for the design phase (e.g., standards and architecture)?
8. What is the scope of Clarus vis-à-vis related State DOT databases such as road condition (e.g. CARS, HCRS) and CCTV servers?



Next Steps

- Synthesis of ICC Discussion
 - ITS America
- Input to the Concept of Operations
 - Iteris/Meridian
- Review on Concept of Operations Development
 - ITS America / PBS&J

